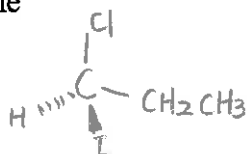


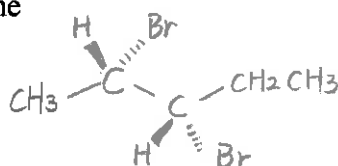
## Quiz #2

2/20/2015

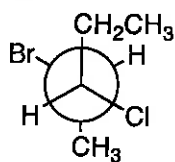
- 1) Draw the structures of the following molecules (4 pts)  
 (R)-1-iodo-1-chloropropane



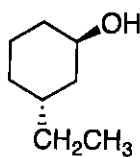
- (2S,3S)-2,3-dibromopentane



- 2) Name the following molecules (4 points)

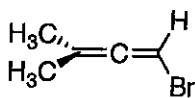


(2R,3S)-2-bromo-3-chloropentane

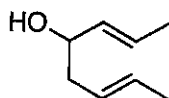


(1R,3R)-3-ethylcyclohexanol

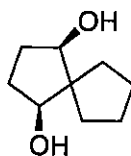
- 3) Are the following molecules achiral? Or chiral? (4 points)



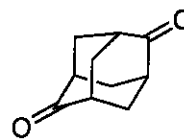
Achiral



chiral



Achiral



Achiral

- 4) Provide examples (3 points)

A) a pair of enantiomers with more than 2 stereogenic centers.

B) Chiral molecule without stereogenic centers.

C) Meso compound

